



TEL: 858-488-5231

WWW.REVERSEENGINEERING.COM

REVERSE ENGINEERING SOFTWARE FOR RHINOCEROS



Image Courtesy of
Franklin Shelley@ Gearles Designs

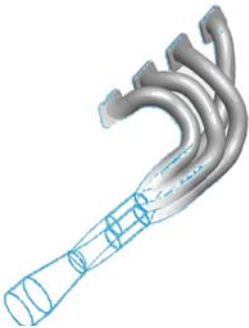


Image Courtesy of
Auto Research Center

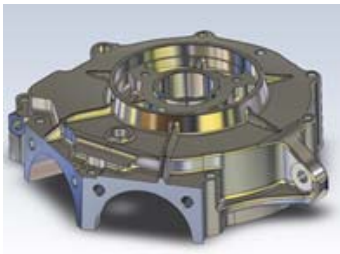


Image Courtesy of
Franklin Shelley@ Gearles Designs

ADVANCED

- 2D & 3D Digitize
 - Point to Plane - Drag cursor across Rhinoceros default plane to create entity to default tolerance
- Create Points, Lines, Closed Lines, Splines, Closed Splines
- Rectangles and Circles
- Cutplane off-set via digitizer or user defined
- 3D Axis Plane Tolerancing and Auto Align features
- Set plane off-set via point, digitizer, absolute or relative
- Create rectangles, create circles, center radius, 3 point and radius
- Probe compensation for circles and planes for 3mm and 6mm balls

INDUSTRIAL

Includes all ADVANCED functions plus:

- Create 3 point planes for cutplane data capture
- Digitize and mouse pick CP offsets
- Mouse pick center, digitize radius
- Cut Plane with User Defined tolerance
- Custom probe compensation for 3D and 2D circle

Added-Value Power Feature Modules

Feature PLUS 1

Measurement and analysis plug-in of time saving digitizer power features, digitize by time, digitize by distance, and SMARTSTITCH. ADVANCED or INDUSTRIAL required.

Feature PLUS 2

Automated mapping functions to digitize large over-size objects. ADVANCED or INDUSTRIAL required.

Feature PLUS 3

Part to CAD. Align CMM coordinates to CAD/CAM coordinates for real time comparison. ADVANCED or INDUSTRIAL required.

Feature PLUS 4

Real time inspection feature including holes, spheres, cones, least squared, etc. Multiple Scan Planes, to quickly gather points organized on each plane. ADVANCED or INDUSTRIAL required.

Feature PLUS 5

HighRES Integrated Point Processor (HIPPP); bring point clouds direct into Rhinoceros as native entities.

Eliminate the need to import free form digitized geometry

- Digitize Direct in your native CAD/CAM
- Modify and evaluate your 3D generated models
- 2 tiered software options, for the advanced user through the industrial
- Link directly to your portable CMM

