



TEL: 858-488-5231

WWW.REVERSEENGINEERING.COM

REVERSE ENGINEERING SOFTWARE FOR SIEMENS NX



Image Courtesy of Franklin Shelley@ Gearles Designs

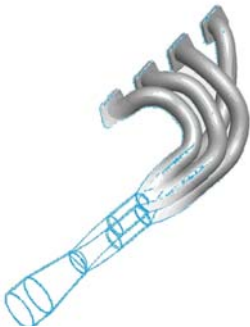


Image Courtesy of Auto Research Center

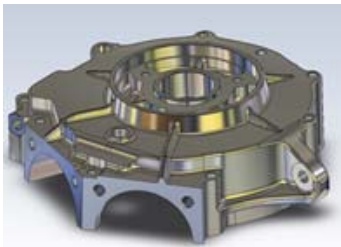


Image Courtesy of Franklin Shelley@ Gearles Designs

INDUSTRIAL

Set 3 point axis; Desktop 3 points equal 0,0,0 in NX; represents x, y plane

- Turns NX into a dynamic digitizing platform
- 3D Features Digitize Entities
 - Points, Open Line, Closed Line, Open Spline, Closed Spline,
 - (Complete Freeform 3D digitizing in NX)
- 2D Features Digitize Entities in NX Sketch Planes
 - Points, Open Line, Closed Line, Open Spline, Closed Spline, (all of the above with or without Points Displayed)
- Create Circle, Arcs & Rectangles
- Complete "Target & Lock" cutplane axis system
- Measure Point to Point in real time
- 3D Axis Plane Tolerancing and Auto Align Features
- Enables users to define sensitivity of the digitizing device
- Create automatic 3 point Sketch Planes with digitizer
- Measure sphere via 4 points and find Center
- Measure angle between planes
- 2D digitize Ellipses, 3 point rectangles & pick center circles for absolute modeling of shafts
- 3D cutplane entity creation for planerized entities without sketch plane association. Profiles used for trimming solids/surfaces
- Cutplane offset with digitizer for quick and easy sketch plane creation

Added-Value Power Feature Modules

Feature PLUS 1

Automated plug-in of time saving digitizer power features, digitize by time, digitize by distance, and SMART-STITCH. ADVANCED or INDUSTRIAL required.

Feature PLUS 2

Mapping functions to digitize large over-size objects. ADVANCED or INDUSTRIAL required.

Feature PLUS 3

Part to CAD. Align CMM coordinates to CAD coordinates for real time comparison. ADVANCED or INDUSTRIAL required.

Feature PLUS 4

Looped inspection feature including holes, spheres, cones, etc. ADVANCED or INDUSTRIAL required.

Feature PLUS 5

HighRES Integrated Point Processor (HIPP); bring point clouds direct into NX as native entities.

Eliminate the need to import free form digitized geometry

- Digitize Direct in NX
- Modify and evaluate your 3D generated NX models
- Software options, for the advanced user through the industrial
- Link directly to your portable CMM

System Requirements and Recommended Configurations

Copyright HighRES, Inc 2005. 20 GB Hard Drive free space minimum, Microsoft Windows XP, Pentium 4, Windows XPSP2 support requires support contract, 1 Gig Ram, HighRES Compatible Digitizer, Wireframe, Solids, and Surfaces limited to compatible CAD/CAM software interface, graphics performance requires high resolution graphics Card 128 MB, OpenGL graphics. Graphics acceleration varies from none to full depending on CAD/CAM software interface. HighRES Inc Reserves the Right to modify its products. All Information is subject to change without notice. All Rights reserved. All trade marks are the property of their respective owners.

